

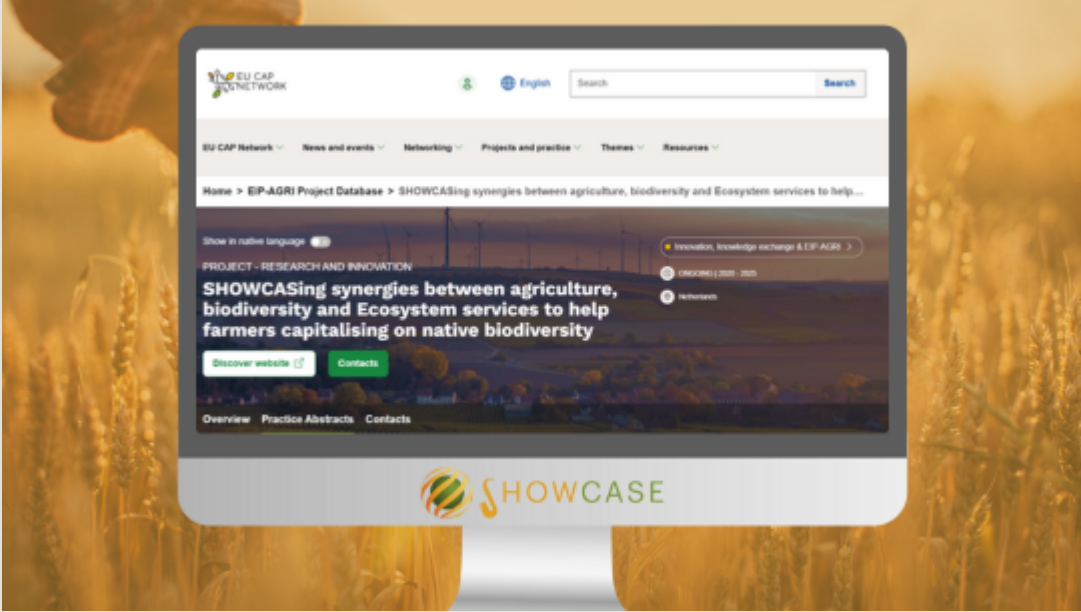


SHOWCASE Newsletter: Volume VI

With summer nearing to an end, SHOWCASE is back with more results and achievements! Take a look at them below.

Policy corner

Explore SHOWCASE's contributions to environmental policy



SHOWCASE is proud to announce the publication of four practice abstracts on the [EU CAP Network platform](#), marking a significant step in promoting biodiversity integration within European agriculture. These findings support farmers in adopting sustainable practices that enhance native biodiversity while maintaining productive, resilient farming systems. As a key hub for sharing knowledge under the EU Common Agricultural Policy, the platform ensures wide accessibility of SHOWCASE's results to farmers, advisors, policymakers and other stakeholders across Europe, delivering practical, evidence-based insights and actionable solutions that align with the [CAP's sustainability goals](#).

[Read more](#)

Updates corner

Find out more about the latest SHOWCASE news and activities



SHOWCASE has just completed a multi-lingual campaign on X to promote InsectsCount, a new app for monitoring pollinators. Run in [English](#), [German](#), [Spanish](#), [French](#), [Swedish](#) and [Dutch](#), the campaign aimed to engage farmers, environmental groups and citizen scientists across Europe in tracking vital insects like bees, butterflies and hoverflies.

[Read more](#)



SHOWCASE researcher Gabriella Bishop from Wageningen University shared insights from her PhD journey exploring how to protect pollinators in intensively farmed landscapes, offering valuable lessons for sustaining biodiversity and resilient food systems.

[Read more](#)



As per tradition, SHOWCASE released a 2024 Highlights video in December to commemorate the end of the year and present its results and achievements.

[Watch the video](#)



In an effort to advance sustainable agricultural practices, [LEAF](#) officially launched a [public consultation](#) on their assurance scheme, LEAF Marque, which aims to refine its standards for sustainable farming. Stakeholders, including farmers, businesses and consumers, were encouraged to participate and share their insights on the proposed changes.

[Read about the consultation](#)



November 2024 was also marked by the grand occasion of SHOWCASE partners gathering one last time in Cadiz, Spain for the Annual General meeting. Each institution shared their progress from the past year and where they will focus their efforts in the upcoming year as the project comes to an end October 2025.

[Read more](#)

Dissemination corner

Learn how SHOWCASE partners presented the project



SIBECOL-AEET Meeting
2025

[Read more](#)

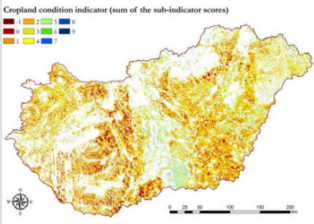


Innovation Through
Communication 2025

[Read more](#)

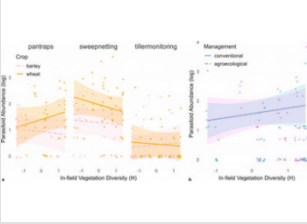
Publications corner

Discover new SHOWCASE publications



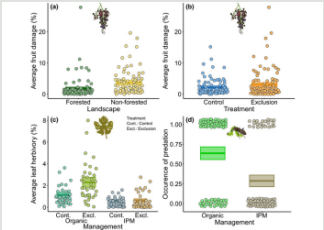
Assessing pressure based cropland condition indicators and their relationship with farmland biodiversity

[Read the paper](#)



The role of landscape and management in sustainable pest control in Switzerland

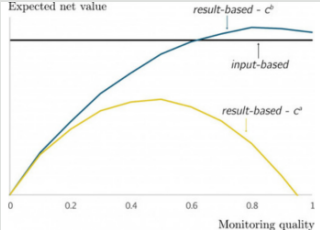
[Read the paper](#)



Birds and bats boost pest control and vineyard health in forested landscapes



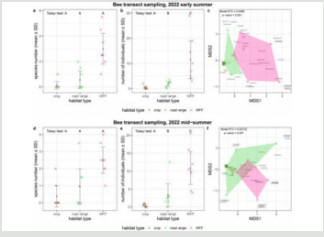
Factors influencing farmers' decisions to implement biodiversity measures in agricultural landscapes



Enhancing biodiversity conservation through cost-effective and accurate monitoring

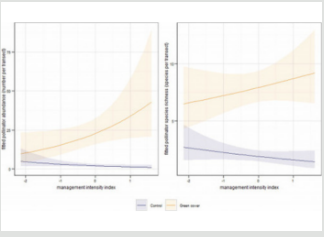
in result-based schemes

Read the paper




Ecological diversity across habitats in a Central European agricultural landscape: Insights on plants, pollinators and predators

Read the paper



Green covers enhance biodiversity in Mediterranean orchards

Read the paper



Exploring the role of perennial crops in sustainable agriculture and global policy

SHOWCASE features

Take a look where SHOWCASE has been featured lately



SHOWCASE was featured in the European Research Council and European Research Executive Agency’s publication “[Biodiversity: The Nexus Approach](#)”, which highlights leading EU-funded projects addressing the links between biodiversity, water, food systems, human health and climate change. Being included in this selection underscores SHOWCASE’s role as a key initiative integrating biodiversity into farming practices, demonstrating the project’s relevance to EU priorities and its contribution to sustainable agriculture.

Read more

Partner contributions

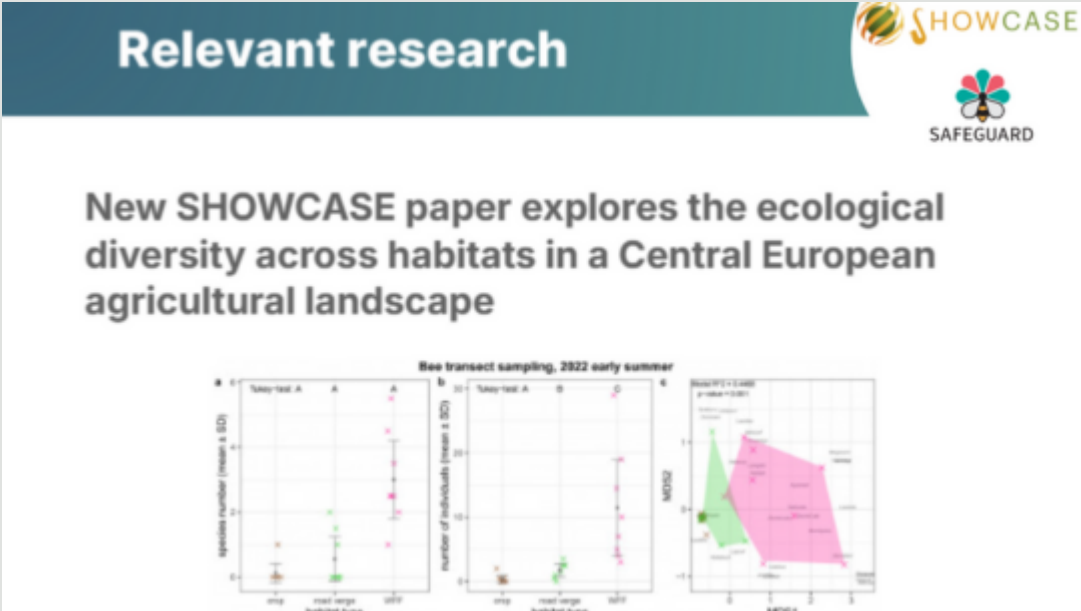
Find out more about other SHOWCASE-related contributions by partners

SHOWCASE partner Dr Ignasi Bartomeus recently co-authored an article in the prominent Spanish newspaper El País discussing the [Natural Restoration Regulations](#) and the importance of conserving biodiversity. The article suggests that this regulation presents a unique opportunity for society to reverse environmental degradation and its negative impacts, helping to secure our future by supporting the implementation of ecosystem services which benefit both our health and quality of life.

Read more

Synergies

Find out more about SHOWCASE's collaboration with other projects



SHOWCASE was featured on the latest edition of the newsletter of the [Safeguard project](#), highlighting a recent study on how different farmland habitats, such as crop fields, road verges and wildflower fields, support pollinators and predators. Conducted for over a year, the research revealed clear habitat differences despite its short duration, offering valuable ecological insights that align with Safeguard’s mission to help reverse wild pollinator declines in Europe.

Read more



A joint SHOWCASE and [SELINA](#) study by [HUN-REN Centre for Ecological Research](#) tests how well a pressure-based cropland condition map reflects actual biodiversity using farmland bird data, while assessing the relevance of thresholds, key proxy variables and spatial variation, addressing accuracy concerns in national ecosystem condition mapping under the [EU Biodiversity Strategy for 2030](#).

[Read more](#)



On July 15, 2025, the Horizon Europe Mission Soil sister projects [WHEATWATCHER](#) and [E-SPFdigit](#) hosted their first joint webinar on “*Digital innovations for soil and crop health*.” With over 140 participants, the session highlighted how AI-powered sensing, multi-sensor platforms and real-time diagnostics are shaping the future of sustainable agriculture. Coordinators Prof. Abdul Mouazen and Dr. Ria Pechlivani, respectively, presented the projects’ core technologies and discussed challenges such as data ownership, scaling and stakeholder engagement.

[Watch the full recording](#)

Upcoming events

Take a look at upcoming events

This year, HUN-REN Centre for Ecological Research hosts its 10th Student Conference on Conservation Science where SHOWCASE will be featured. Additionally, project partner Pensoft will host an interactive workshop, designed to equip participants with practical tools and strategies to communicate their results to diverse audiences - including other researchers, policymakers, industry representatives, journalists and the general public. The main aim of the workshop is to provide insights to ECRs on how to translate complex research into accessible, compelling messages that resonate to a variety of target groups

[Read more about 5th ESP Europe Conference](#)

If this newsletter was forwarded to you but in the future, you would like to receive it directly in your inbox, please subscribe via the button below.

[Subscribe](#)

Missed a newsletter? Find all previous newsletters on the website.

[Previous newsletters](#)

SHOWCASE Project

This project receives funding from the European Union's Horizon 2020 research and innovation programme under grant agreement No. 862480. Views and opinions expressed are however those of the author(s) only and do not necessarily reflect those of the European Union or the European Commission. Neither the EU nor the EC can be held responsible for them.



You received this email because you signed up for our newsletter or because someone you know forwarded it to you.

[Unsubscribe](#)