

# What a loss

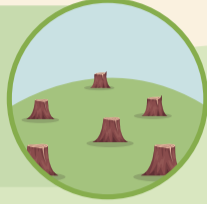
## Tracing food waste's impact on biodiversity

20% of food produced in the EU is discarded, generating up to **130 Mt of food waste** per year. When food is wasted, all the resources required to produce it are wasted. Food waste is therefore **directly linked to the loss of biodiversity** and **exceeding the limits of natural resources**:

20%

### Land use

Overexploitation of land leads to **deforestation and habitat destruction**.



### Pollinators

Pollinator species are vital for food availability but are **endangered by chemicals and habitat destruction**.



### Pollution

Food waste in landfills emits methane, polluting water and **harming aquatic life**.



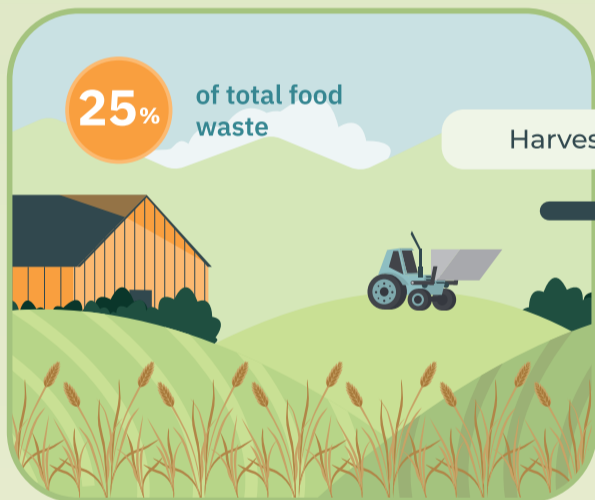
### Overfishing

Food waste exacerbates the **depletion of marine biodiversity** (over 35% of caught fish is wasted).



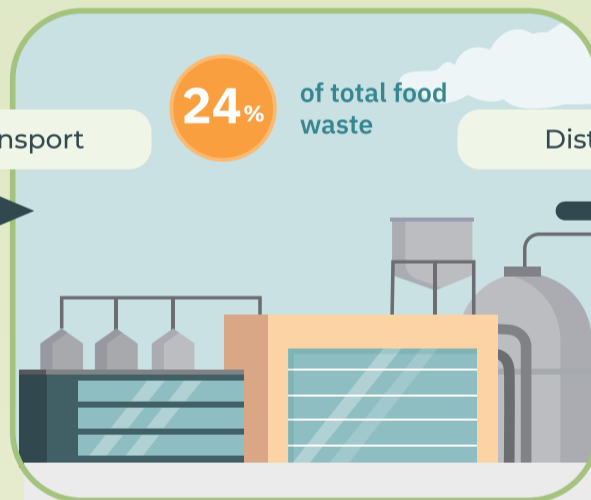
## Food waste occurs at every stage of the supply chain

### Primary production



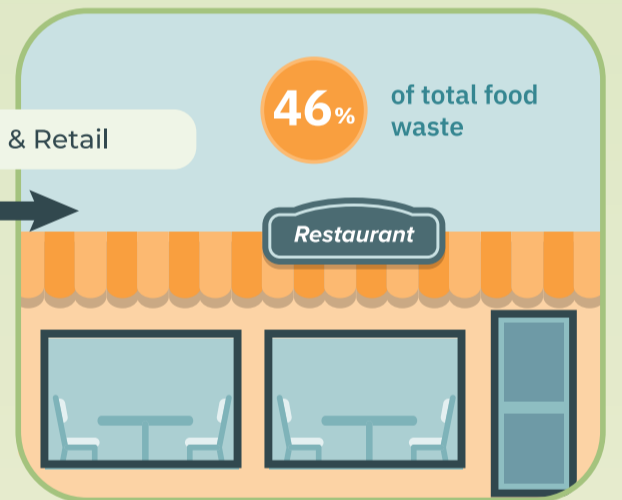
Harvesting & Transport

### Processing & manufacturing



Distribution & Retail

### Consumption



## How do we tackle food waste?

### 1 Prevent

The primary focus

**Minimizing surplus food** and **reducing waste** at every stage of the food supply chain.



### 2 Re-use

The second line of defense

Using surplus food meant for humans where possible and **repurposing food** as animal feed.



### 3 Recycle

The last resource

**Transforming** food waste into **high-value products** such as chemicals, materials and fuels.

